

# ONSITE PROGRAM

## HOME CARE 100

LEADERSHIP & STRATEGY CONFERENCE

February 1–4, 2014

Boca Raton Resort & Club, FL  
A Waldorf Astoria Resort

---

[www.homecare100.com](http://www.homecare100.com)

▶ **PLEASE NOTE**

Most recreation activities are sold out.

If you are holding a spot but do not plan on participating, please let us know by emailing [HC100Rec@gmail.com](mailto:HC100Rec@gmail.com) or stopping by the Welcome or Information Desk.

# Table of Contents

---

General Information.....	2
Schedule At A Glance .....	3
Map of Activities.....	4
Education Summary.....	5
Conference Agenda .....	6-11
2015 Home Care 100 Conference .....	11
Spouse Program.....	12-13
2014 Advisory Board .....	14
2014 Home Care & Hospice LINK Conference .....	15

## General Information

---

### ► Welcome Desk

#### *Lobby & Across Room*

**Saturday** 9:00 am – 5:00 pm  
7:30 pm – 8:00 pm

Partner: 

**Sunday** 10:00 am – 5:00 pm

### ► Information Desk

#### *Camino Foyer*

**Monday** 7:00 am – 4:00 pm  
**Tuesday** 7:00 – 11:30 am

### ► Transportation Questions

Contact Robyn at (954) 650-9372 or  
rgilbert@hello-florida.com.

### ► Conference Questions

Call our on-site office at (561) 447-5515.  
From inside the hotel, please use extension 5515.

### ► Conference Attire

Home Care 100 is business casual for most of the conference. Recreation activity attire is casual. For Monday night's Roaring 20's Dinner, get into the spirit with a 1920's inspired ensemble. Ladies: think fringe, feathers and long pearl necklaces. Gentlemen: think pinstripes, fedoras and bowties.

### ► Lincoln Executive Bookshop

#### *Camino Foyer*

**Monday** 7:00 am – 4:00 pm  
**Tuesday** 7:00 – 11:30 am

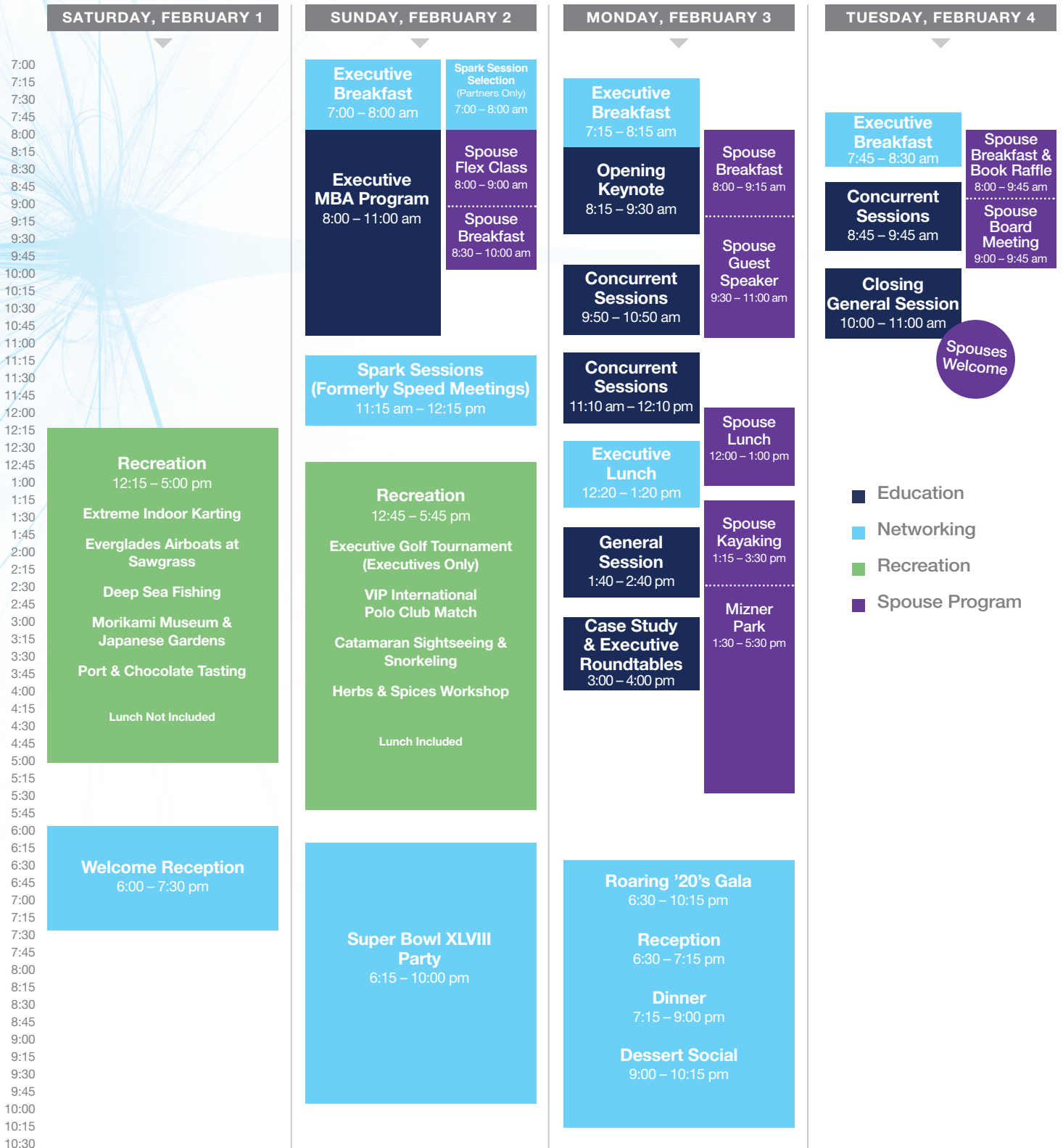
### ► Boarding Pass Printing

#### *Camino Foyer*

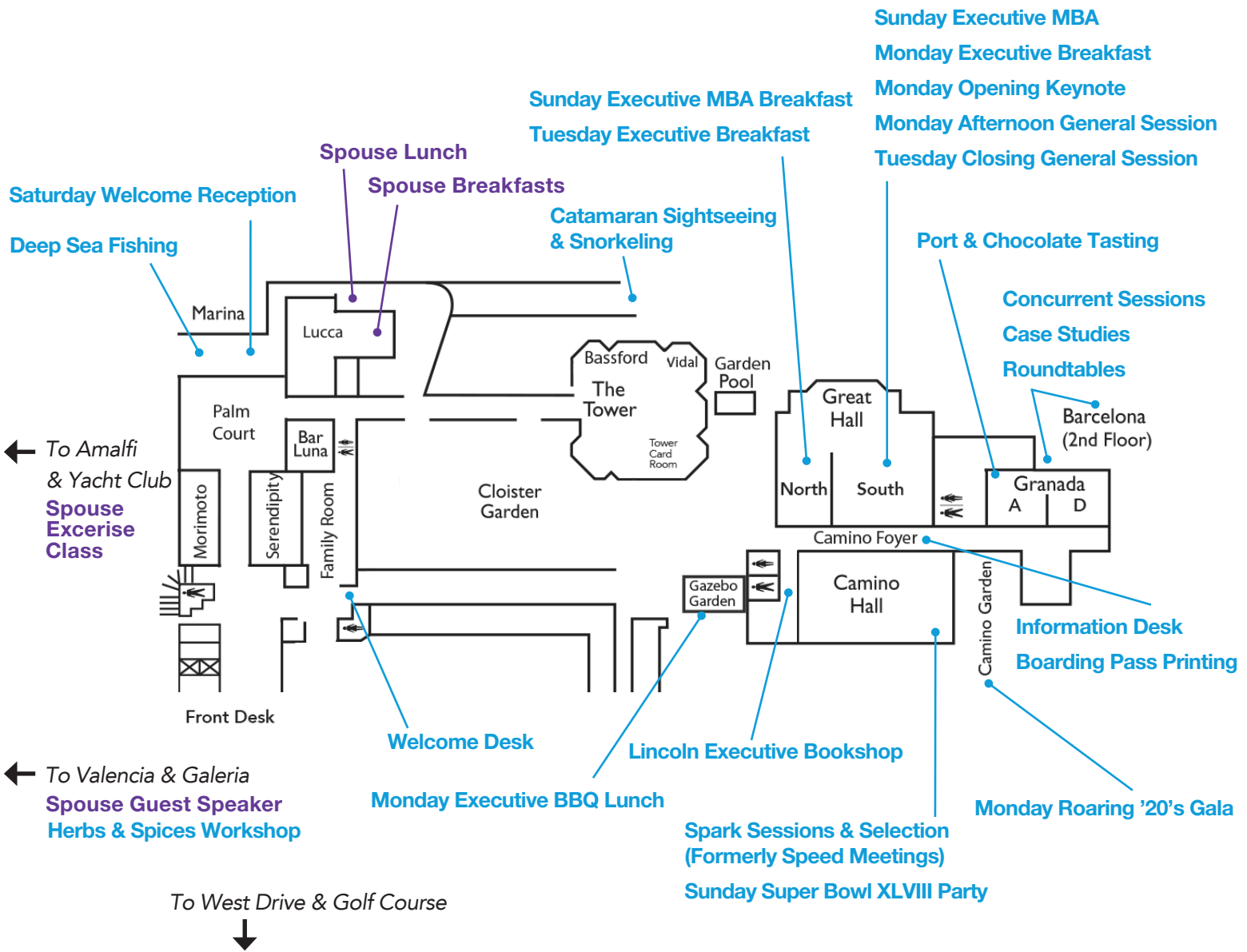
**Tuesday** 7:00 – 11:30 am

We'll print your boarding pass so that you can stay for the entire conference and then quickly depart. Visit us at the Information Desk.

# Schedule At A Glance



# Map of Home Care 100 Activities



Meet at the WEST DRIVE of the hotel for these activities	Back up locations for outdoor activities in case of inclement weather
<p><b>Saturday</b></p> <ul style="list-style-type: none"> <li>• Morikami Museum &amp; Japanese Gardens</li> <li>• Extreme Indoor Karting</li> <li>• Everglades Airboats at Sawgrass</li> </ul> <p><b>Sunday</b></p> <ul style="list-style-type: none"> <li>• VIP International Polo Club Match</li> </ul> <p><b>Monday</b></p> <ul style="list-style-type: none"> <li>• Mizner Park (Spouse Activity)</li> </ul>	<p><b>Saturday</b></p> <ul style="list-style-type: none"> <li>• Welcome Reception: Valencia</li> </ul> <p><b>Sunday</b></p> <ul style="list-style-type: none"> <li>• BBQ Lunch: Great Hall North</li> </ul> <p><b>Monday</b></p> <ul style="list-style-type: none"> <li>• Spouse Lunch: Lucca Garden Room</li> </ul>

*Spouse Program activities are throughout the resort.*

*Please see pages 12 - 13 for a full list of Spouse Program activities.*

## SUNDAY, FEBRUARY 2

8:00 - 11:00 AM | Executive MBA Program

**Leapfrogging Into the Healthcare Future**  
*Great Hall South*

## MONDAY, FEBRUARY 3

8:15 - 9:30 AM | Opening General Session

**Disrupting Healthcare**  
*Great Hall South*

9:50 - 10:50 AM | Concurrent Sessions

**Humana Cares/SeniorBridge Case Study:  
Embracing the Role of the Provider**  
*Barcelona A*

**Person-Centered Care: The Heart of Satisfaction**  
*Granada D*

**Accountable Care Debate: The Healthcare Model  
of the Future or an Impending Failure?**  
*Granada A*

**Hospice Advocacy for a Changing Landscape**  
*Barcelona D*

11:10 am - 12:10 PM | Concurrent Sessions

**DaVita HealthCare Partners Case Study:  
Integrated Care Management**  
*Barcelona A*

**Bundled Payments:  
Opportunity, Threat, or Another Policy Fad?**  
*Granada D*

**Think Tank: The 20% Challenge - Top 10 Ideas  
for Streamlining Your Business Model**  
*Granada A*

## MONDAY, FEBRUARY 3 (CONT.)

1:40 - 2:40 PM | General Session

**The Impact of ACA on Home Care and Hospice  
Financial Markets: Buying, Selling and Valuation**  
*Great Hall South*

3:00 - 4:00 PM | Case Study

**Walgreens' Case Study: Take Care Health Systems**  
*Barcelona D*

3:00 - 4:00 PM | Executive Roundtables

**Integrated Delivery Models: Surviving the ACA**  
*Barcelona A*

**The ACA and Home Care: What's Next?**  
*Granada A*

## TUESDAY, FEBRUARY 4

8:45 - 9:45 AM | Concurrent Sessions

**Aetna Case Study: Reducing Utilization  
and Improving Outcomes with Nurse Case  
Management**  
*Granada A*

**Essential Insights on Health Insurance Exchanges  
for Home Care & Hospice**  
*Granada D*

10:00 - 11:00 AM | Closing General Session

**Home Care 100 Wrap-Up:  
The Consequences of Disruption**  
*Great Hall South*



12:15 – 5:00 PM

## Recreation

Please note: Lunch is not included

12:15 – 5:00 pm **Extreme Indoor Karting**

**Meet:** At the West Drive at 12:15 pm. The shuttle will leave promptly at 12:30 pm.

**Includes:** Bottled water, snacks

**Suggested Attire:** Comfortable clothes, closed-toe shoes

Partner:  **CellTrak**  
connected with care

12:30 – 3:45 pm **Everglades Airboats at Sawgrass**

**Meet:** At the West Drive at 12:30 pm. The shuttle will leave promptly at 12:45 pm.

**Includes:** Bottled water, snacks, sunblock, earplugs

**Suggested Attire:** Comfortable clothes, closed-toe shoes, skirts are not recommended

Partner:  **TRANSPIRUS**

12:45 – 5:00 pm **Deep Sea Fishing**

**Meet:** At the Boca Raton Resort Docks at 12:45 pm. The boats will leave promptly at 1:00 pm.

**Includes:** Bottled water, snacks, sunblock

**Suggested Attire:** Comfortable clothes, closed-toe shoes, sunglasses, cap, windbreaker or sweater

Partner:  **KRONOS**

12:45 – 4:00 pm **Morikami Museum & Gardens**

**Meet:** At the West Drive at 12:45 pm. The shuttle will leave promptly at 1:00 pm.

**Includes:** Bottled water, snacks, sunblock

**Suggested Attire:** Comfortable clothes, walking shoes, sunglasses

Partner:  **SelectData**

1:00 – 3:00 pm **Port & Chocolate Tasting**

**Meet:** In Granada A at 1:00 pm.

**Includes:** Ports, chocolates, snacks, water

**Suggested Attire:** Comfortable clothes. Please refrain from wearing heavy perfumes or lotions as they may affect the tasting experience.

Partner:  **HEALTH MARKET SCIENCE**

6:00 – 7:30 PM

## Welcome Reception

### Marina

Catch up with fellow attendees over cocktails and hors d'oeuvres while enjoying stunning views of the Intracoastal Waterway at the Boca Raton Resort's enchanting exclusive marina.

Partner:  **procura**  
Home Care Software

7:00 – 8:00 AM

## Executive Breakfast

Great Hall North

Partner:  **CARDIOCOM**  
EXPERTS IN TELEHEALTH™

7:00 – 8:00 AM

## Spark Session Selection (Formerly Speed Meeting Selection)

Camino Hall

Sign up times below are for Conference Partners and based on level of participation.

**Underwriter Level:** 7:00 AM  
**Leadership Level:** 7:15 AM  
**Executive Level:** 7:30 AM

8:00 – 11:00 AM

## Executive MBA Program

Great Hall South

### Leapfrogging Into the Healthcare Future



The disruptive changes facing healthcare leaders today represent big opportunities for business breakthroughs for those who don't become paralyzed by uncertainty. While innovation may seem easy for companies like Apple or Google, many home care and hospice organizations struggle to reinvent their business models to drive significant growth.

Soren Kaplan, author of the award-winning bestseller *Leapfrogging*, will lead this highly-interactive session on how to leverage emerging trends, co-create solutions with customers, and embrace disruptive innovation to shape your future.

**Soren will host a book signing after this session outside of Great Hall South.**

---

**11:00 - 11:15 AM**

**Break**

---

**11:15 AM – 12:15 PM**

**Spark Sessions (Formerly Speed Meetings)**

**Camino Hall**

Provider attendees and a select group of sponsors participate in these highly productive, rapid-format meetings which provide an opportunity to “spark” a conversation with fellow thought leaders on the most top-of-mind issues facing Home Care and Hospice.

---

**12:15 - 12:45 PM**

**Break**

---

**12:45 – 5:45 PM**

**Recreation**

*Please note: Lunch is included*

**12:45 – 5:30 pm Executive Golf Tournament at Boca Raton Resort Golf Course (Executives Only)**

**Meet:** At the Resort Course by 12:45 pm. The course is a short walk from the West Drive of the hotel. Tee off is promptly at 1:00 pm.

**Includes:** Bottled water, sunblock, boxed sandwich lunch

**Acceptable Attire:** Collared shirt, long pants, walking shorts

**Unacceptable Attire:** T-shirt, tank tops, athletic shorts, cut-offs, jeans, metal spikes

**12:45 – 4:00 pm Catamaran Sightseeing & Snorkeling**

**Meet:** At the Boca Raton Resort Tower Docks at 12:45 pm. The catamaran will leave promptly at 1:00 pm.

**Includes:** Bottled water, sunblock, boxed sandwich lunch, personal snorkeling equipment

**Suggested Attire:** Bathing suit, comfortable clothes, shoes and sunglasses.

Partner:



**1:00 – 5:45 pm VIP International Polo Club Match**

**Meet:** At the West Drive at 1:00 pm. The shuttle will leave promptly at 1:15 pm.

**Includes:** Bottled water, brunch

**Suggested Attire:** Resort attire such as sundresses or skirts for women and slacks and collared shirts for men. Please do not wear heels as you will be on grass.

Partner:



**1:00 – 3:30 pm Herbs & Spices Workshop**

**Meet:** In Galeria South promptly at 1:00 pm.

**Includes:** Lunch, tapa, dessert

**Suggested Attire:** Comfortable clothes. Please keep in mind cooking can get messy!

Partner:



**6:15 – 10:00 PM**

**Super Bowl XLVIII Party**

**Camino Hall**



You don't need tickets to the big game to catch all the action during this fun and casual reception with all the Super Bowl essentials – big screen TVs, BBQ, Super Bowl pool and prizes.

Partner:



**Snap & Share!**

Conference attendees are invited to share their recreation photos with Home Care 100 by emailing [HC100Rec@gmail.com](mailto:HC100Rec@gmail.com).

---

**7:15 – 8:15 AM**  
**Executive Breakfast**  
*Great Hall South*



**8:15 – 9:30 AM**  
**Opening Keynote**  
*Great Hall South*

**Disrupting Healthcare**



The drive for improved efficiency and outcomes along with an increasingly empowered consumer are sparking new care models, partnerships and market entrants. Through that lens, noted healthcare disruptor David Agus, MD, will explore what the future holds for healthcare, with a focus specifically on home care and hospice.

Dr. Agus is a Professor of Medicine and Engineering at the University of Southern California’s Keck School of Medicine and the Viterbi School of Engineering, and heads USC’s Westside Cancer Center and the Center for Applied Molecular Medicine.

**Dr. Agus will host a book signing after this session outside of Greath Hall South.**

**9:30 - 9:50 AM**  
**Break**



**9:50 – 10:50 AM**  
**Concurrent Sessions**

**Humana Cares/SeniorBridge Case Study:  
 Embracing the Role of the Provider**  
*Barcelona A*



In 2012, Humana took its first step into the role of healthcare provider by acquiring SeniorBridge, a NY-based home care agency. Claudia Fine will discuss the rationale behind the acquisition, Humana’s strategy on integrated care, how they’ve leveraged this acquisition to manage the chronically ill and expand services, and how they plan to gain market share and continue to evolve into a full-fledged healthcare provider.

**Claudia Fine**, Chief of Professional Services, Humana Cares/SeniorBridge

**Person-Centered Care: The Heart of Satisfaction**  
*Granada D*

How does your organization become “measurably successful”? Panelists will discuss the metrics they utilize to demonstrate their value under the ACA, the methods and challenges of collecting the appropriate data, and how partners are evaluated based on these metrics.



**Christine Lang** (Moderator), Senior Director, OCS HomeCare by National Research Corporation  
**Barbara McCann**, Chief Industry Officer, Interim Healthcare

**Accountable Care Debate: The Healthcare Model of the Future or an Impending Failure?**  
*Granada A*

Will ACO pilot programs prevail and continue to grow or will infrastructure issues, cultural barriers and lack of systemic change lead to their inevitable demise? Experts will debate the pros and cons and forecast what the future holds for the ACO.



**Gregg Hathorne** (Moderator), Principal, CliftonLarsonAllen LLP  
**Ann Christensen**, President, Clayton Christensen Institute for Disruptive Innovation  
**Denise Keefe**, President, Advocate Home Health Services

**Hospice Advocacy for a Changing Landscape**  
*Barcelona D*

Join this insightful session for an overview of the key challenges ahead for hospice providers, how grassroots advocacy can change the direction of the discussion, and the concrete steps your hospice organization can take to turn your members of Congress into hospice champions.



**Anthony Kudner** (Moderator), Manager, Grassroots Advocacy, National Hospice and Palliative Care Organization  
**Monica Lewis-McCommas**, Administrator, Silverado Hospice

**10:50 - 11:10 AM**  
**Break**





**11:10 AM – 12:10 PM**  
**Concurrent Sessions**

**DaVita HealthCare Partners Case Study:  
Integrated Care Management**  
*Barcelona A*



In 2012, DaVita merged with HealthCare Partners, the country's largest operator of medical groups and physician networks, to become one of the nation's largest and most innovative healthcare communities. Learn how DaVita HealthCare Partners is leading the partnership trend, developing an ACO, and creating collaborative opportunities for home care and hospice.

**William Chin**, MD, Executive Medical Director, DaVita HealthCare Partners

**Bundled Payments: Opportunity, Threat or  
A Policy Fad?**  
*Granada D*

Panelists will debate how widespread bundles will become in the next five years, the relationship to ACOs, the opportunity or threat to providers, and what it takes financially and operationally to excel at bundled care.



**Jeannee Parker-Martin** (Moderator), CEO, The Corridor Group  
**Marcia Reissig**, CEO, Sutter Care at Home  
**Jim Robinson**, CDO, Amedysis  
**David Terry**, COO, Remedy Partners

**Think Tank: The 20% Challenge -  
Top 10 Ideas for Streamlining Your Business Model**  
*Granada A*

Every home care and hospice provider is being forced to take a hard look at operational costs. With pressure on the cost/quality equation, a think tank of leading operators and experts has been challenged with generating innovative ideas to achieve a 20% improvement in cost/quality and will present their findings at Home Care 100.



**William Simione, III** (Moderator), Principal, Simione Healthcare Consultants  
**David Baiada**, Division Director, BAYADA Home Health Care  
**Ray Darcey**, President, Sentara Enterprises  
**Karen Thomas**, President, Oxford HealthCare

**12:10 - 12:20 PM**  
**Break**

**12:20 – 1:20 PM**  
**Executive BBQ Lunch**  
*Gazebo Garden*

Partner:  **HealthWyse**  
*Always one step ahead*

**1:20 - 1:40 PM**  
**Break**

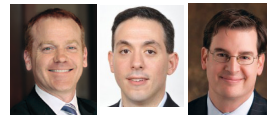
Partner:  **brother**  
at your side

*Brother Mobile Solutions, Inc.*

**1:40 – 2:40 PM**  
**General Session**  
*Great Hall South*

**The Impact of ACA on Home Care &  
Hospice Financial Markets: Buying, Selling & Valuation**

Top analysts will explore how the dramatic changes spurred by the ACA, regulatory and legislative activity, and the current economic environment will affect home care and hospice capital markets, M&A activity and valuations.



**Robert Harris** (Moderator), Partner, Member of Board of Directors, Waller  
**Nick Donkar**, Healthcare Deals Partners, PricewaterhouseCoopers  
**David Merritt**, Partner & Managing Director, Leavitt Partners

**2:40 - 3:00 PM**  
**Break**

Partner:  **airwatch**  
We Simplify Enterprise Mobility

**3:00 – 4:00 PM**  
**Case Study**  
*Barcelona D*

**Walgreens' Take Care Health Systems**



Dr. Alan London, CMO of Walgreens' Take Care Health Systems, will share how they leverage the strength of the Walgreens brand to attract patients to their retail clinics, which includes a network of more than 70,000 healthcare professionals employed across their pharmacy, infusion, and other lines of business including a recent initiative to form an ACO.

**Alan London**, MD, CMO, Take Care Health Systems, Walgreens

3:00 – 4:00 PM

**Executive Roundtables**

Explore specific topic areas in an environment that is highly conducive to learning and sharing. Roundtables will be facilitated by thought leaders with expertise in the topic area.



**Integrated Delivery Models: Surviving the ACA**  
*Barcelona A*

**Tim Ashe**, Partner, Director of Operational Consulting, Fazzi Associates



**The ACA & Home Care: What's Next?**  
*Granada A*

**Les Levinson**, Partner, Edwards Wildman Palmer LLP

6:30 – 10:15 PM

**Roaring '20's Gala**

Join us as we swing into Monday night with the sights and sounds of the roaring 1920s – jazz music, speakeasy atmosphere and prohibition inspired cocktails. Glamour and gangsters defined the decade so get into the spirit with a 1920's inspired ensemble. Ladies: think fringe, feathers and long pearl necklaces. Gentlemen: think pinstripes, fedoras and bowties.

6:30 - 7:15 PM

**Reception**

*Camino Garden*

Partner:



7:15 - 9:00 PM

**Dinner**

*Great Hall South*

Partner:



9:00 - 10:15 PM

**Dessert Social**

*Camino Hall*

Partner:



7:45 – 8:30 AM

**Executive Breakfast**

*Great Hall North*

Partner:



8:30 - 8:45 PM

**Break**

8:45 – 9:45 AM

**Concurrent Sessions**

**Essential Insights on Health Insurance Exchanges for Home Care & Hospice**

*Granada D*

Regulators from different states – approaching new health insurance exchanges in different ways – will share their firsthand experiences with creating exchanges.



**Jeff Liberman** (Moderator), Member of the Firm, Epstein Becker Green  
**Sue Birch**, Executive Director, Colorado Department of Health Care Policy and Financing  
**Becca Pearce**, Executive Director, Maryland Health Connection

**Aetna Case Study: Reducing Utilization & Improving Outcomes with Nurse Case Management**

*Granada A*



Prompted by significant gaps in care for the elderly with advanced illnesses, Aetna's Compassionate Care Program has resulted in significant reductions in acute inpatient days, ER visits and ICU days. The program's director will share insights on their success and Aetna's aim to work with hospice and palliative care to support the care of the elderly.

**Dr. Joseph Agostini**, Senior Medical Director for Medicare, Aetna

**NEW!**

**ACHE Credits at Home Care 100!**

Home Care 100 is now authorized to award 14 hours of pre-approved ACHE Qualified Education credit (non-ACHE) for this program toward advancement, or recertification in the American College of Healthcare Executives. Participants in this program wishing to have the continuing education hours applied to ACHE Qualified Education credit should indicate their attendance when submitting their application to the American College of Healthcare Executives.

9:45 - 10:45 PM

Break

10:00 – 11:00 AM

**Closing General Session**

*Great Hall South*

**Home Care 100 Wrap-Up:  
The Consequences of Disruption**



Synthesizing the major themes and takeaways from the conference, this highly interactive session will net out what disruption means for home care and hospice providers, and identify the key steps you need to take to succeed in the healthcare future. The drive for increased efficiency and improved outcomes, an increasingly empowered consumer, new care models and partnerships, payment reform, and extra-industry retail and technology players are all known critical market drivers. What else is on the horizon? Where are the risks? What are the opportunities? Which threats are merely red herrings?

**John Richter**, Chief Practice Officer, CliftonLarsonAllen LLP

**Notable Participants**



- Arnie Burchianti**, CEO, Celtic Healthcare
- Erin Denholm**, SVP Clinical Transformation, Centura Health
- Mark Heaney**, President & CEO, Addus HomeCare
- Lynn Jones**, President & CEO, Christiana Care VNA
- Marcia Reissig**, CEO, Sutter Care at Home
- Karen Thomas**, President, Oxford Healthcare



**Boarding Pass Printing**

**Tuesday 7:00 - 11:30 AM**  
Camino Foyer

We'll print your boarding pass on Tuesday so that you can stay for the entire conference and then depart quickly.

**Join Us Next Year!**

**HOME CARE 100**

**LEADERSHIP & STRATEGY CONFERENCE**

**January 31 - February 3, 2015**

**Ritz-Carlton, Laguna Niguel**  
**Dana Point, CA**

Attendance Limited to 100 Providers

Register By February 14 to Guarantee Your Place



**VISIT** the Information Desk

OR



**ONLINE** at [www.homecare100.com](http://www.homecare100.com)

**SPECIAL OFFER FOR 2014 ATTENDEES**



# Spouse Program

## SATURDAY, FEBRUARY 1

12:15 – 5:00 PM

### Recreation

#### 12:15 – 5:00 pm Extreme Indoor Karting

**Meet:** At the West Drive at 12:15 pm. The shuttle will leave promptly at 12:30 pm.

**Includes:** Bottled water, snacks

**Suggested Attire:** Comfortable clothes, closed-toe shoes

#### 12:30 – 3:45 pm Everglades Airboats at Sawgrass



**Meet:** At the West Drive at 12:30 pm. The shuttle will leave promptly at 12:45 pm.

**Includes:** Bottled water, snacks, sunblock, earplugs

**Suggested Attire:** Comfortable clothes, closed-toe shoes, skirts are not recommended

#### 12:45 – 5:00 pm Deep Sea Fishing

**Meet:** At the Boca Raton Resort Docks at 12:45 pm. The boats will leave promptly at 1:00 pm.

**Includes:** Bottled water, snacks, sunblock

**Suggested Attire:** Comfortable clothes, closed-toe shoes, sunglasses, cap, windbreaker or sweater

#### 12:45 – 4:00 pm Morikami Museum & Gardens

**Meet:** At the West Drive at 12:45 pm. The shuttle will leave promptly at 1:00 pm.

**Includes:** Bottled water, snacks, sunblock

**Suggested Attire:** Comfortable clothes, walking shoes, sunglasses

#### 1:00 – 3:00 pm Port & Chocolate Tasting

**Meet:** In Granada A at 1:00 pm.

**Includes:** Ports, chocolates, snacks, water

**Suggested Attire:** Comfortable clothes. Please refrain from wearing heavy perfumes or lotions as they may affect the tasting experience.

6:00 – 7:30 PM

### Welcome Reception

#### Marina

Catch up with fellow attendees over cocktails and hors d'oeuvres while enjoying stunning views of the Intracoastal Waterway at the Boca Raton Resort's enchanting exclusive marina.

## SUNDAY, FEBRUARY 2

8:00 – 9:00 AM

### Spouse "Flex" Exercise

#### Amalfi

This total body workout is designed to improve your muscle strength by utilizing free weights, body bars, and bands. Learn how to stay toned even without a gym!

8:30 – 10:00 AM

### Spouse Breakfast

#### Lucca Garden Room

Get to know other spouses – and make new friends – over a delicious breakfast.

12:45 – 5:45 PM

### Recreation

#### 12:45 – 4:00 pm Catamaran Sightseeing & Snorkeling

**Meet:** At the Boca Raton Resort Tower Docks at 12:45 pm. The catamaran will leave promptly at 1:00 pm.

**Includes:** Bottled water, sunblock, boxed sandwich lunch, personal snorkeling equipment

**Suggested Attire:** Bathing suit, comfortable clothes, shoes and sunglasses.

#### 1:00 – 5:45 pm VIP International Polo Club Match

**Meet:** At the West Drive at 1:00 pm. The shuttle will leave promptly at 1:15 pm.

**Includes:** Bottled water, brunch

**Suggested Attire:** Resort attire such as sundresses or skirts for women and slacks and collared shirts for men. Please do not wear heels as you will be on grass.

#### 1:00 – 3:30 pm Herbs & Spices Workshop

**Meet:** In Galeria South promptly at 1:00 pm.

**Includes:** Lunch, tapa, dessert

**Suggested Attire:** Comfortable clothes. Please keep in mind cooking can get messy!

6:15 – 10:00 PM

### Super Bowl XLVIII Party

#### Camino Hall



You don't need tickets to the big game to catch all the action during this fun and casual reception with all the Super Bowl essentials – big screen TVs, BBQ, Super Bowl pool and prizes.

## MONDAY, FEBRUARY 3

8:00 – 9:15 AM

**Spouse Breakfast**  
*Lucca Garden Room*

9:30 – 11:00 AM  
**Train Your Brain!**  
**With Michael Cohen**  
*Valencia*

Guest  
Speaker



Focusing on Neuro-feedback, which changes actual brain activity, Michael Cohen will demonstrate how you can harness the power of your brain to make a huge impact on your life. Some willing participants will be wired and have their brain waves analyzed “live.” Bring your burning questions and teach your brain a thing or two!

12:00 – 1:00 PM

**Spouse Lunch**  
*El Lago Terrace*

1:15 – 3:30 PM

**Kayaking**  
*Meet at the Boca Raton Resort Tower Docks*

Boca Raton offers a distinctive kayaking adventure! No prior experience required.

**Meet:** At 1:15 pm at the Boca Raton Tower Docks. Kayaking will begin promptly at 1:30 pm

**Includes:** Bottled water, snacks

**Suggested Attire:** Comfortable clothes, walking shoes, sunglasses

1:30 – 5:30 PM

**Mizner Park**  
*Meet at the West Drive*

A shuttle will bring you to famed outdoor shopping plaza, Mizner Park where you can enjoy unique boutiques, sumptuous eateries, and inspiring art wrapped in an ocean breeze.

**Meet:** At the West Drive for a looping shuttle beginning at 1:30 pm.

**Includes:** Bottled water, snacks

**Suggested Attire:** Casual clothes, comfortable shoes

Shuttle times to Max's Restaurant at Mizner Park:

1:30 pm | 2:30 pm | 3:30 pm

Shuttle times back to Boca Raton Resort:

3:00 pm | 4:00 pm | 5:00 pm

## MONDAY, FEBRUARY 3 CONTINUED

6:30 – 10:15 PM

**Roaring '20's Gala**

Join us as we swing into Monday night with the sights and sounds of the roaring 1920s – jazz music, speakeasy atmosphere and prohibition inspired cocktails. Glamour and gangsters defined the decade so get into the spirit with a 1920's inspired ensemble. Ladies: think fringe, feathers and long pearl necklaces. Gentlemen: think pinstripes, fedoras and bowties.

6:30 - 7:15 PM

**Reception**  
*Camino Garden*

7:15 - 9:00 PM

**Dinner**  
*Great Hall South*

9:00 - 10:15 PM

**Dessert Social**  
*Camino Hall*

## TUESDAY, FEBRUARY 4

8:00 – 9:45 AM

**Spouse Breakfast**  
*Lucca Garden Room*

8:50 AM

**Spouse Book Raffle!**  
*Lucca Garden Room*

Ten winners will be selected to choose a book from the *50 Great Books That Will Change Your Life* booklet found in your spouse folder. Must be present to win.

9:00 – 9:45 AM

**Spouse Board Meeting**  
*Lucca Garden Room*

Open to all spouses. Join us to start planning the 2015 event!

10:00 – 11:00 AM

**Closing General Session**  
*Great Hall South*

**Home Care 100 Wrap-Up:**  
**The Consequences of Disruption**

*Please see Page 11 for a full description.*

Spouses  
Invited!



# 2014 Advisory Board

---

Thank you to our Advisory Board who help shape the educational program, support the conference and keep it fresh each year.



**Tim Ashe**  
Partner, Director of  
Operational Consulting  
*Fazzi Associates*



**Samira Beckwith**  
President & CEO  
*Hope HealthCare Services*



**Bill Borne**  
CEO  
*Amedisys Home Health  
Care & Hospice*



**Sherl Brand**  
Chief External Affairs  
Officer & VP, Bus. Dev.  
*VNA Health Group*



**Arnie Burchianti**  
CEO  
*Celtic Healthcare*



**Ray Darcey**  
President  
*Sentara Enterprises*



**Erin Denholm**  
CEO  
*Centura Health at Home*



**Val Halamandaris**  
President  
*NAHC*



**Mark Heaney**  
President & CEO  
*Addus HomeCare*



**Carla Hughes**  
VP, Sales & Marketing  
*Heartland Home  
Health Care and Hospice*



**Lynn Jones**  
President & CEO  
*Christiana Care VNA*



**Joan Marren**  
Strategic Projects  
Consultant  
*Loma Linda Home Care  
Services*



**Marcia Reissig**  
CEO  
*Sutter Care at Home*



**John Richter**  
Chief Practice Officer  
*CliftonLarson.Allen LLP*



**William Yarmuth**  
Chairman & CEO  
*Almost Family*

**JOIN US AT THE 2<sup>ND</sup> ANNUAL**

Complimentary  
Offer for  
Home Care 100  
Attendees



**June 3-5, 2014**  
**Swissôtel Chicago**

[www.hclinkconference.com](http://www.hclinkconference.com)

**LINK is an incredibly efficient way for you and your senior leadership team to learn about innovative thinking, new products, and best practices. It will help you view your business challenges in a new light and discover creative and actionable solutions that drive profitability, quality, and growth.**

- **Consultative Supplier Solution Meetings**
- **Real Ideas Speed-Meetings**
- **Targeted Best Practices**
- **Peer-to-Peer Networking**

Home Care & Hospice **LINK** is organized by the Lincoln Healthcare Group, producers of Home Care 100 and LTC & Senior Living LINK.

**HOME CARE 100**  
LEADERSHIP & STRATEGY CONFERENCE

**LINCOLN**  
HEALTHCARE GROUP

**Learn More about Home Care & Hospice LINK at the  
Lincoln Healthcare Group Table in the Camino Foyer**

# Thank You To Our Conference Partners

---

Home Care 100 is funded largely by major contributions from partnering organizations who are committed to the future of home care and hospice.

## UNDERWRITER:

---



## LEADERSHIP:

---



## EXECUTIVE:

---



Brother Mobile Solutions, Inc.



National Recruiting Experts in Home Health Care and Hospice



## CONTRIBUTOR:

---

AirWatch

Bosch Healthcare

CliftonLarsonAllen LLP

GE Capital,

Healthcare Financial Services

Healthcare Finance Group, LLC

Heffernan Insurance Brokers

HospiScript,

a Catamaran Company

Houlihan Lokey, Inc.

InHome Medical Solutions

The Joint Commission

McBee Associates

Medline Industries, Inc.

Medalogix

OCS HomeCare by

National Research Corporation

Precision Medical Billing

Raymond James & Associates

Relias Learning

Waller

## PARTICIPANT:

---

CareTree

Community Health Accreditation Program

Deyta, LLC

Edwards Wildman Palmer LLP

Enclara Health

Harris Williams & Co.

Healthcare Market Resources

HomecareCRM

Provident Healthcare Partners, LLC

Provista

Qualcomm Life

SunTrust Robinson Humphrey

Toshiba America Information Systems, Inc.